

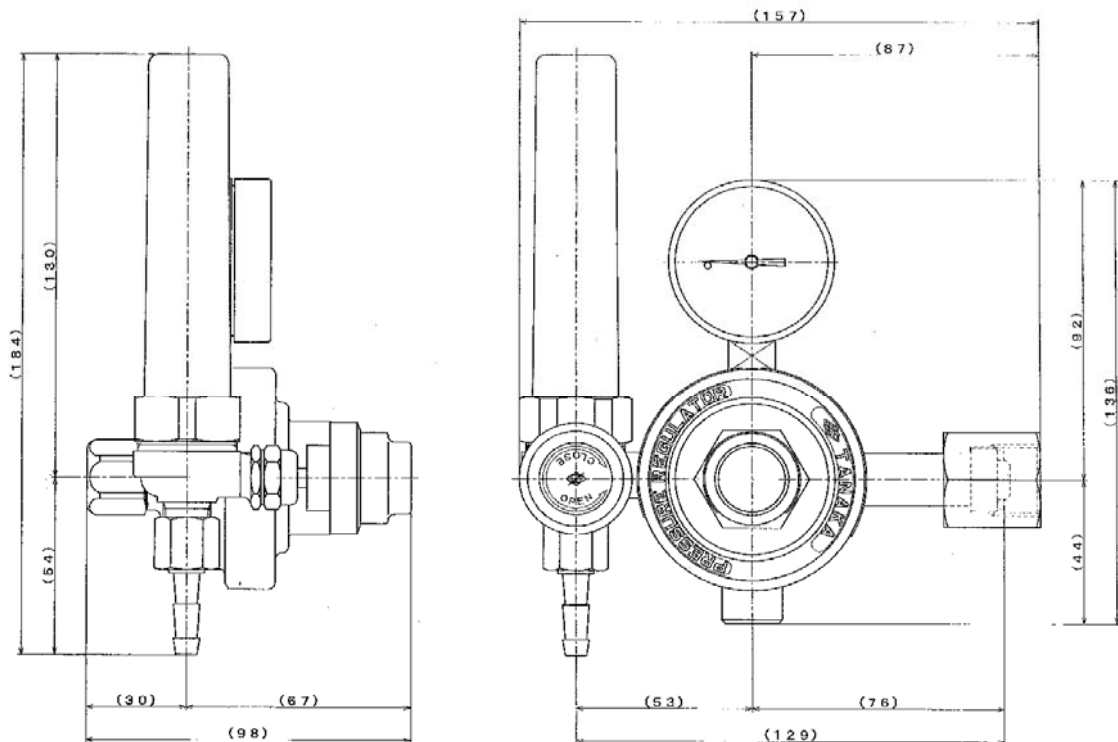
# TANAKA

# VENUS-F22 CO2

## SINGLE STAGE REGULATOR

### Standard Feature

- Applied for CO2
- Inlet pressure gauge: 0 - 4,000psi (0 - 280kg/cm<sup>2</sup>)
- Outlet pressure gauge: -
- Maximum inlet pressure: Less 2,100psi (15kg/cm<sup>2</sup>)
- Maximum outlet pressure: 29psi (2kg/cm<sup>2</sup>)
- Inlet connection: CGA, BS Type Connection Available
- Outlet connection: 9/16-18 UNF-RH
- Flow meter: 1 - 25 L/min (Preset: 29psi (2kg/cm<sup>2</sup>))
- Operating temperature: -10°C ~ 40°C
- Body material: C3771 Brass
- Approximate weight: 1,300g



## NISSAN TANAKA CORPORATION

# TANAKA

# VENUS SINGLE STAGE REGULATOR

for INDUSTRIAL GASES



VENUS Oxygen



VENUS Nitrogen



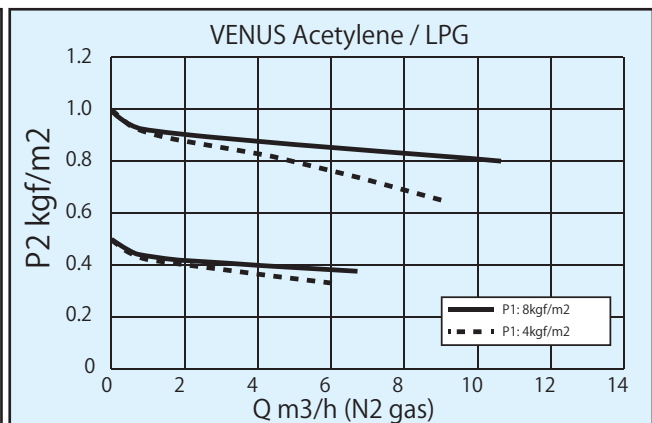
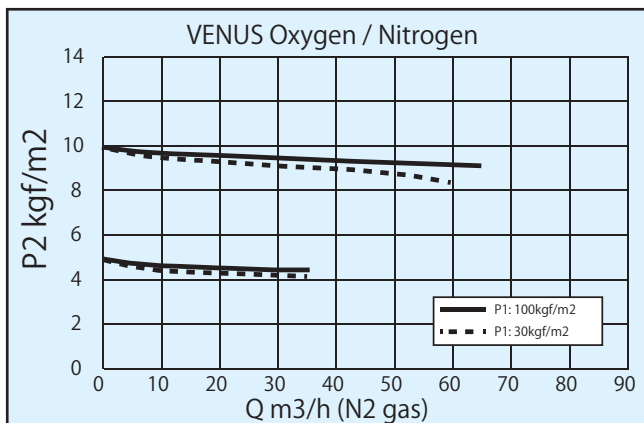
VENUS Acetylene



VENUS LPG

## Standard Feature

Model	VENUS Oxygen	VENUS Nitrogen	VENUS Acetylene	VENUS LPG
Applied gases	Oxygen	Nitrogen	Acetylene	LPG
Inlet pressure gauge	0 - 250kg/cm <sup>2</sup> (0 - 3,550lb/in <sup>2</sup> )		0 - 40kg/cm <sup>2</sup> (0 - 560lb/in <sup>2</sup> )	
Outlet pressure gauge	0 - 25kg/cm <sup>2</sup> (0 - 355lb/in <sup>2</sup> )		0 - 2.1kg/cm <sup>2</sup> (0 - 30lb/in <sup>2</sup> )	
Maximum inlet pressure	150kg/cm <sup>2</sup> (2,100lb/in <sup>2</sup> )		15kg/cm <sup>2</sup> (210lb/in <sup>2</sup> )	
Maximum outlet pressure	10kg/cm <sup>2</sup> (140lb/in <sup>2</sup> )		1kg/cm <sup>2</sup> (14lb/in <sup>2</sup> )	
Inlet connection (CGA / BS)	CGA-540 / BS-3	CGA-580 / BS-3	CGA-300 / BS-2	CGA-510 / BS-2
Outlet connection	(CGA) 9/16-18UNF RH with CGA hose nipple (BS) G3/8-19 RH with BS hose nipple		(CGA) 9/16-18UNF LH with CGA hose nipple (BS) G3/8-19 LH with BS hose nipple	
Operating temperature	-10°C ~ 40°C			
Material	(Body) C3771 Brass / (Diaphragm) NR			
Approximate weight	1.0kg			

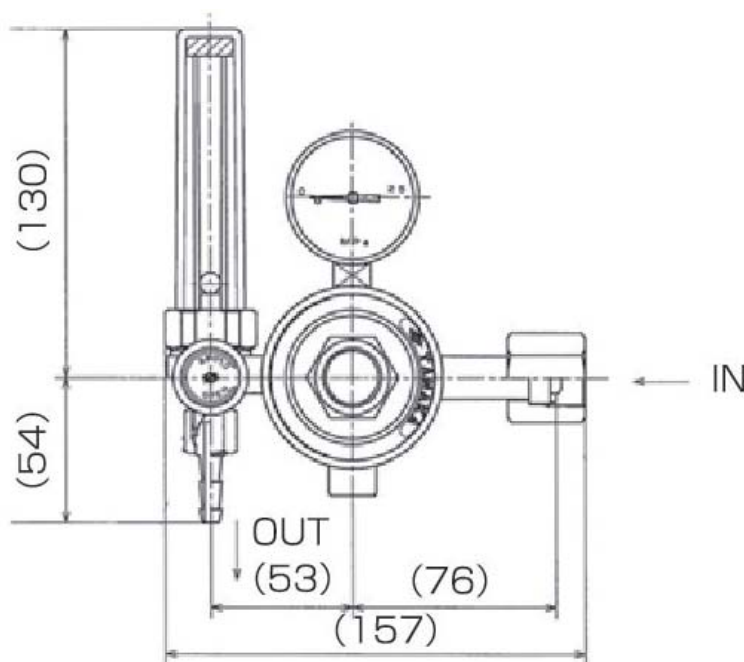


**NISSAN TANAKA CORPORATION**

# TANAKA

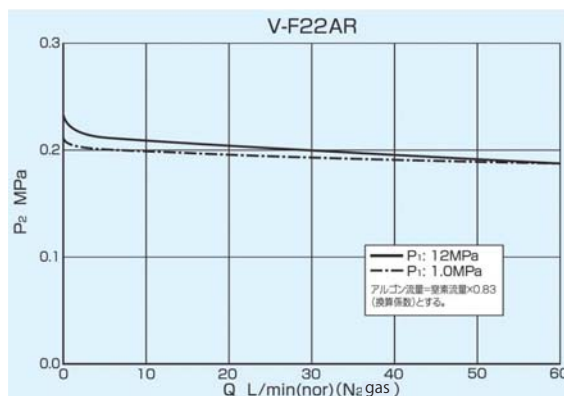
# V-F22AR SINGLE STAGE REGULATOR

Argon and Mixed shielded gas for Welding



## Standard Feature

- Applied gas: Argon
- Inlet pressure gauge: 0 - 4,000psi (0 - 280kg/cm<sup>2</sup>)
- Outlet pressure gauge: Nil
- Maximum inlet pressure: Less 2,100psi (148kg/cm<sup>2</sup>)
- Maximum outlet pressure (Preset): 29psi (2kg/cm<sup>2</sup>)
- Inlet connection: BS-3, CGA-580, W22-14 RH-Male
- Outlet connection: 3/8 BSP-RH, 9/16-18 UNF-RH
- Flowmeter (tube type): 1 - 25 L/min (Preset: 29psi (2kg/cm<sup>2</sup>))
- Accuracy of flow rate:  $\pm 5\%$  F.S. (at 20°C / 0.2MPa)
- Operating temperature: -10°C ~ 40°C
- Body material: C3771 Brass
- Approximate weight: 1.3kg



NISSAN TANAKA CORPORATION